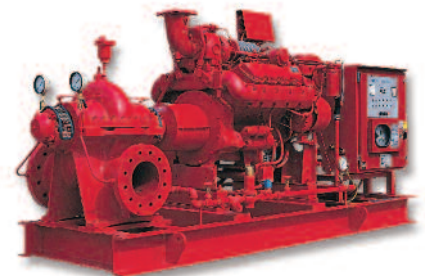




Highly Evolved...



Total Performance
Fire Pump Packages

Venturi Fire Pump Flow Meter



Venturi Fire Pump Test Meter

Venturi:

- 1018 or 1026
- Solid Carbon Steel (machined)
- Carbon Steel Thick Wall Pipe and/or Tube (machined)
- Material Certs Available
- Powder Coating "Red" or .0005 Zinc Plating

Meters:

- Aluminum 4" Dial, 1/4 MNPT Connections 304SS Case with Rubber Ring, Glass Window buna-n Seal

Ball Valves:

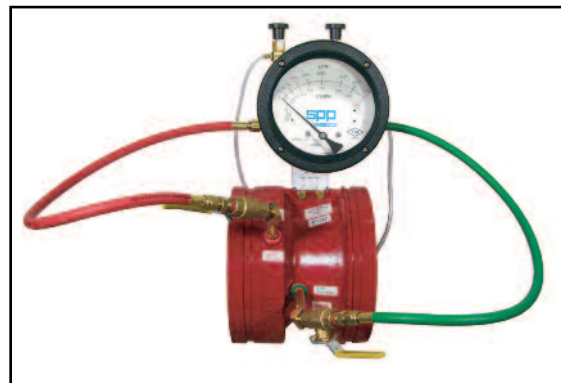
- Brass (CA360)

Brass Fittings:

- Brass (CA360)

Hoses:

- "Goodyear" Rubber Hose
- Brass (CA360) Fittings (Rated: 750 psi working Pressure)



SPP your first choice for all your flow needs

SPP is the leader in Flow Technology. Our mission is to maintain this reputation by providing the highest level of quality and customer satisfaction. We are FM approved and our equipment is ISO 17025 certified.

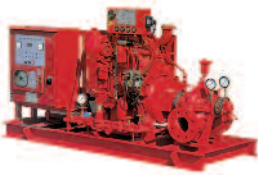


SPP PUMPS INC.

Line Size	Pump GPM	Meter Range Min. & Max. GPM	Meter Range Min. & Max. LPM	Model Number Grooved	Model Number Butt Weld	Model Number 150# Flanged	Model Number <Threaded> *300# FLANGED*
**1-1/4"	25	12.5 – 50	47 - 189	*SPP-25-1.25"-G	SPP-25-1.25"-B	*SPP-25-1.25"-F	SPP-25-1.25"-T
**2"	50	25 – 100	95 - 379	* SPP-50-2"-G	SPP-50-2"-B	* SPP-50-2"-F	SPP-50-2"-T
**2-1/2"	100	50 - 200	189 - 757	SPP-100-2.5"-G	SPP-100-2.5"-B	SPP-100-2.5"-F	*SPP-100-2.5"-F3
3"	150	75 – 300	284 - 1136	SPP-150-3"-G	SPP-150-3"-B	SPP-150-2.5"-F	*SPP-150-3"-F3
3"	200	100 – 400	379 - 1514	SPP-200-3"-G	SPP-200-3"-B	SPP-200-3"-F	*SPP-150-3"-F3
4"	250	125 – 500	473 - 1893	SPP-250-4"-G	SPP-250-4"-B	SPP-250-4"-F	*SPP-250-4"-F3
4"	300	150 – 600	568 - 2271	SPP-300-4"-G	SPP-300-4"-B	SPP-300-4"-F	*SPP-300-4"-F3
4"	400	200 – 800	757 - 3028	SPP-400-4"-G	SPP-400-4"-B	SPP-400-4"-F	*SPP-400-4"-F3
4"	450	225 – 900	852 - 3407	SPP-450-4"-G	SPP-450-4"-B	SPP-450-4"-F	*SPP-450-4"-F3
5"	450	225 – 900	852 - 3407	SPP-450-5"-G	SPP-450-5"-B	SPP-450-5"-F	*SPP-450-5"-F3
5"	500	250 – 1000	946 - 3785	SPP-500-5"-G	SPP-500-5"-B	SPP-500-5"-F	*SPP-500-5"-F3
5"	750	375 – 1500	1420 - 5678	SPP-750-5"-G	SPP-750-5"-B	SPP-750-5"-F	*SPP-750-5"-F3
6"	500	250 – 1000	946 - 3785	SPP-500-6"-G	SPP-500-6"-B	SPP-500-6"-F	SPP-500-6"-F3
6"	750	375 – 1500	1420 - 5678	SPP-750-6"-G	SPP-750-6"-B	SPP-750-6"-F	SPP-750-6"-F3
6"	1000	500 – 2000	1893 - 7570	SPP-1000-6"-G	SPP-1000-6"-B	SPP-1000-6"-F	SPP-1000-6"-F3
6"	1250	625 - 2500	2366 - 9462	SPP-1250-6"-G	SPP-1250-6"-B	SPP-1250-6"-F	SPP-1250-6"-F3

Line Size	Pump GPM	Meter Range Min. & Max. GPM	Meter Range Min. & Max. LPM	Model Number Grooved	Model Number Butt Weld	Model Number Flanged	Model Number *300# FLANGED*
8"	1000	500 – 2000	1893 - 7570	SPP-1000-8"-G	SPP-1000-8"-B	SPP-1000-8"-F	SPP-1000-8"-F3
8"	1250	625 – 2500	2366 - 9462	SPP-1250-8"-G	SPP-1250-8"-B	SPP-1250-8"-F	SPP-1250-8"-F3
8"	1500	750 – 3000	2839 - 11356	SPP-1500-8"-G	SPP-1500-8"-B	SPP-1500-8"-F	SPP-1500-8"-F3
8"	2000	1000 – 4000	3785 - 1514	SPP-2000-8"-G	SPP-2000-8"-B	SPP-2000-8"-F	SPP-2000-8"-F3
8"	2500	1250 – 5000	4731 - 18925	SPP-2500-8"-G	SPP-2500-8"-B	SPP-2500-8"-F	SPP-2500-8"-F3
8"	3000	1500 – 6000	5678 - 22712	SPP-3000-8"-G	SPP-3000-8"-B	SPP-3000-8"-F	SPP-3000-8"-F3
10"	1500	750 – 3000	2839 - 11356	SPP-1500-10"-G	SPP-1500-10"-B	SPP-1500-10"-F	SPP-1500-10"-F3
10"	2000	1000 – 4000	3785 - 15142	SPP-2000-10"-G	SPP-2000-10"-B	SPP-2000-10"-F	SPP-2000-10"-F3
10"	2500	1250 – 5000	4731 - 18925	SPP-2500-10"-G	SPP-2500-10"-B	SPP-2500-10"-F	SPP-2500-10"-F3
10"	3000	1500 – 6000	5678 - 22712	SPP-3000-10"-G	SPP-3000-10"-B	SPP-3000-10"-F	SPP-3000-10"-F3
10"	3500	1750 – 7000	6624 - 26495	SPP-3500-10"-G	SPP-3500-10"-B	SPP-3500-10"-F	SPP-3500-10"-F3
10"	4000	2000 – 8000	7570 - 30283	SPP-4000-10"-G	SPP-4000-10"-B	SPP-4000-10"-F	SPP-4000-10"-F3
10"	4500	2250 – 9000	8518 - 34068	SPP-4500-10"-G	SPP-4500-10"-B	SPP-4500-10"-F	SPP-4500-10"-F3
12"	2500	1250 – 5000	4731 - 18925	* SPP-2500-12"-G	* SPP-2500-12"-B	* SPP-2500-12"-F	*SPP-2500-12"-F3
12"	3000	1500 – 6000	5678 - 22712	* SPP-3000-12"-G	* SPP-3000-12"-B	*SPP-3000-12"-F	*SPP-3000-12"-F3
12"	3500	1750 – 7000	6624 - 26495	* SPP-3500-12"-G	* SPP-3500-12"-B	* SPP-3500-12"-F	*SPP-3500-12"-F3
12"	4000	2000 – 8000	7570 - 30283	*SPP-4000-12"-G	* SPP-4000-12"-B	* SPP-4000-12"-F	*SPP-4000-12"-F3
12"	4500	2250 – 9000	8518 - 34068	* SPP-4500-12"-G	* SPP-4500-12"-B	* SPP-4500-12"-F	*SPP-4500-12"-F3
12"	5000	2500 - 10000	9464 - 37854	SPP-5000-12"-G	SPP-5000-12"-B	SPP-5000-12"-F	SPP-5000-12"-F3

* DENOTES NON-STOCK ITEM, PLEASE CHECK WITH FACTORY FOR AVAILABILITY **SIZES 1-1/4", 2", 2-1/2", & 14" ARE NOT FM APPROVED PER FACTORY MUTUAL**



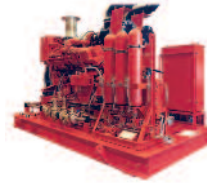
Fire Protection



Water & Industrial



Autoprime



Oil & Gas



Spares & Service

Company History:

For more than 100 years SPP Pumps has been a leading manufacturer of centrifugal pumps and associated systems. Installed globally, SPP pumps provide valuable high integrity services for diverse industries such as oil and gas production, airports, hotels, water and waste water treatment, construction, mines and for large industrial plants.



Highly
Evolved . . .



. . . throughout the World

North & South America

6710 Best Friend Road
Norcross, GA 30071
Ph: 1 (770) 409 3280
Fax: 1 (770) 409 3290

UK Headquarters

Theale Cross, Pincents Lane, Calcot
Reading, Berkshire, RG31 7SP
Ph: 44 (0) 118 932 3123
Fax: 44 (0) 118 932 3302

France

2, rue du Chateau d'eau,
95450 US
Ph: 33 (0) 1 30 27 96 96
Fax: 33 (0) 1 34 66 07 33

Middle East

P O Box 61491, Jebel Ali
Dubai United Arab Emirates
Ph: 971 (0) 4 8838 733
Fax: 971 (0) 4 8838 735

Asia

10 Anson Road, #34-06
Singapore 079903
Ph: (65) 6226 1937
Fax: (65) 6226 2985

South Africa

39 Forge Road, Spartan,
1625 Johannesburg, R.S.A
Ph: (27) 11 394 3922
Fax: (27) 11 970 2472