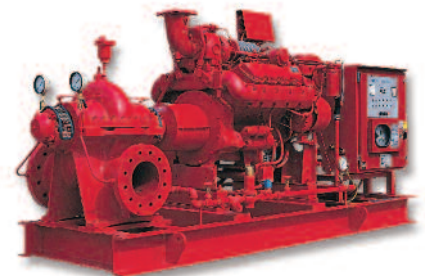




Highly Evolved...



Total Performance
Fire Pump Packages

Jockey Pumps

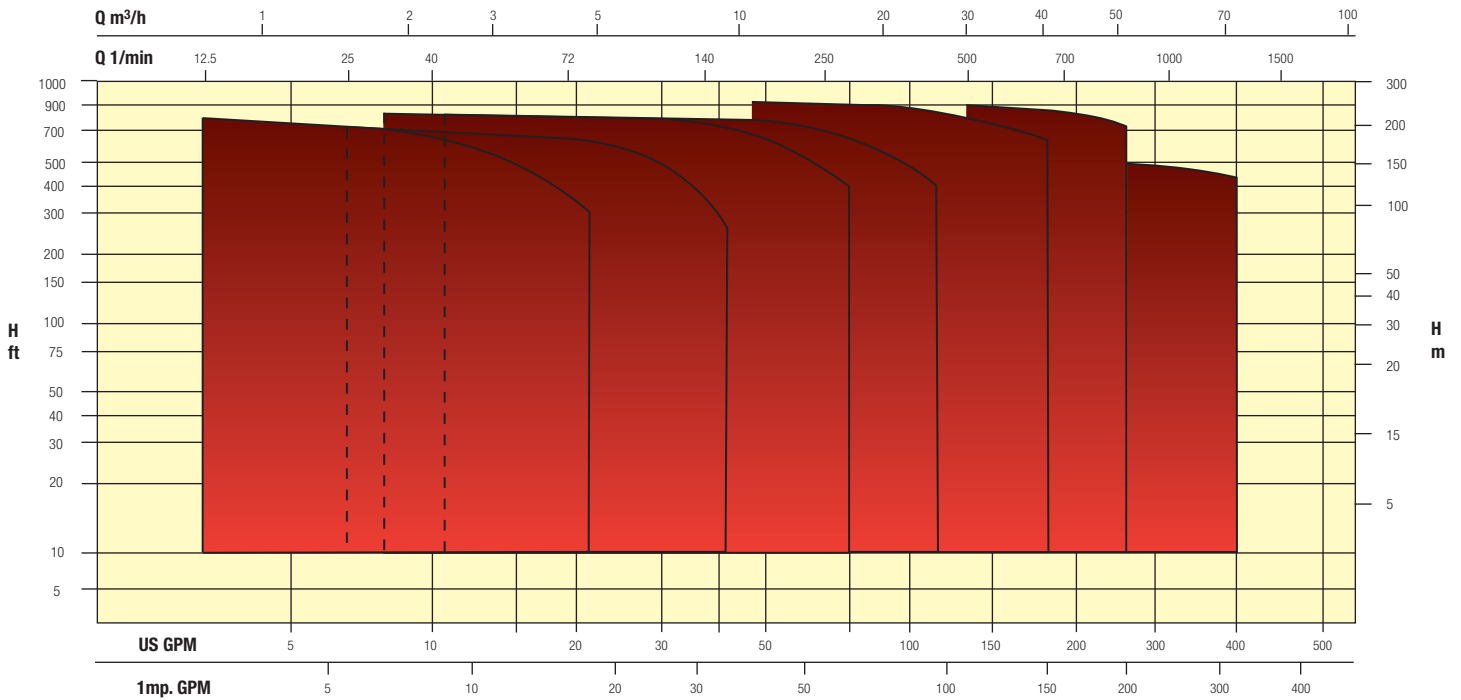


Features

- **Standard NEMA motors**
- **Integral thrust bearing on 5 HP and larger pumps to handle axial thrust loads**
- **Air vent** in casing cover allows proper venting preventing air entrapment and dry run
- **Liner ring** is a self-aligning, floating design constructed to prevent swelling at high temperatures
- **Tungsten carbide lower pump bearings** and sleeves are standard construction for all services, providing maximum operating life
- **Direct drive** pump and motor shafts are keyed for positive, reliable power transmission with **no adjustments necessary**
- **“Flexible” floating outer casing** allows for thermal expansion in hot water applications, preventing deformation due to pressure fluctuations
- **Anti-erosion measures** – a dish-shaped insert is fitted to the intermediate casing designed to promote smooth flow and prevent high velocity areas that accelerate erosion
- **Square-edge six spline shaft** or twelve spline shaft provides positive location and drive of impellers eliminating wear
- **Dimensions & flanges** – installation is to market accepted dimensions for easy upgrade of existing installations
- **Mechanical seal** – Silicon/Carbon/Viton mechanical shaft seal; cartridge seal standard on Models 32, 45, and 64
- **Positive Sealing** – O-rings between intermediate casings provide positive sealing

SPP PUMPS INC.

Selection Chart



Applications

- Water Supply
- Reverse Osmosis
- Water Boosting
- Washing Systems
- Fire Fighting
- Water Treatment Plants
- Boiler Feed
- Hot & Cold Water Circulation
- Irrigation
- Sprinkler Systems
- Filtration
- Heat Exchangers



Connection capabilities:

- Grooved ends
- Threaded ends
- ANSI flange
- Oval flange

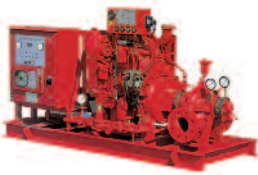
Materials of construction

- Cast iron
- 304 SS/cast iron
- 304 SS
- 316 SS/cast iron
- 316 SS

SPP

PUMPS

www.sppumps.com



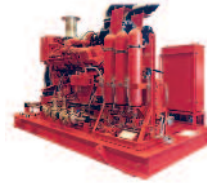
Fire Protection



Water & Industrial



Autoprime



Oil & Gas



Spares & Service

Company History:

For more than 100 years SPP Pumps has been a leading manufacturer of centrifugal pumps and associated systems. Installed globally, SPP pumps provide valuable high integrity services for diverse industries such as oil and gas production, airports, hotels, water and waste water treatment, construction, mines and for large industrial plants.



Highly
Evolved . . .



. . . throughout the World

North & South America

6710 Best Friend Road
Norcross, GA 30071
Ph: 1 (770) 409 3280
Fax: 1 (770) 409 3290

UK Headquarters

Theale Cross, Pincents Lane, Calcot
Reading, Berkshire, RG31 7SP
Ph: 44 (0) 118 932 3123
Fax: 44 (0) 118 932 3302

France

2, rue du Chateau d'eau,
95450 US
Ph: 33 (0) 1 30 27 96 96
Fax: 33 (0) 1 34 66 07 33

Middle East

P O Box 61491, Jebel Ali
Dubai United Arab Emirates
Ph: 971 (0) 4 8838 733
Fax: 971 (0) 4 8838 735

Asia

10 Anson Road, #34-06
Singapore 079903
Ph: (65) 6226 1937
Fax: (65) 6226 2985

South Africa

39 Forge Road, Spartan,
1625 Johannesburg, R.S.A
Ph: (27) 11 394 3922
Fax: (27) 11 970 2472